

Contents



国家高新技术企业 专注生产18年

JIANGSU HAIHONG ELECTRONIC

RF Connector	01
Leaky Cable Connector	02
High Temperature Resistant Cable Connector	03
Panel Connectoer	04
RF Jurple Cable	05
High Temperature Resistant Jurple Cable	06
Bamboo Jurple Cable	07
Surge Arrester	08
Adaptor	09
DC Block	10
RF Cable	11
Leaky Cable	11
High Power Splitter/Divider	12

Contents

JIANGSU HAIHONG ELECTRONIC

Low Power Splitter/Divider	13
Directional Coupler	14
Hybrid Coupler(2*2&4*4)	15
RF Combiner(Dual-Band)	16
RF Load/Termination	17
RF Attenuator	18
RF Combiner(Tri-Band&Four-Band)	19
Antennas	20
Grounding Kits	21
Leaky Cable Clamps	23
RF Cable Clamps	25
Hybrid Cable Clamps.....	27
Accessories	27

RF Connector



Specification	1/4", 1/4"S, 3/8", 3/8"S, 1/2", 1/2"S, 7/8", 7/8"S, 7/8"A, 1-1/4", 1-5/8" feeder cable				
	N type		7/16 type		4.3/10 type
	Straight	Right Angle	Straight	Right Angle	Straight
Characteristics Impedance	50 Ohm	50 Ohm	50 Ohm	50 Ohm	50 Ohm
Frequency Range	DC~18GHz	DC~18GHz	DC~7.5GHz	DC~7.5GHz	DC~6GHz
Insulation Resistance	≥5000MΩ	≥5000MΩ	≥5000MΩ	≥5000MΩ	≥5000MΩ
Center contact resistance	≤1.00 mΩ	≤1.00 mΩ	≤0.40 mΩ	≤0.40 mΩ	≤1.00 mΩ
Outer contact resistance	≤0.25 mΩ	≤0.25 mΩ	≤0.20 mΩ	≤0.20 mΩ	≤1.00 mΩ
Dielectric Withstanding Voltage	2500V rms(AC)	2500V rms(AC)	4000V rms(AC)	4000V rms(AC)	2500V rms(AC)
Insertion Loss(@3 GHz)	≤0.10dB	≤0.10dB	≤0.10dB	≤0.10dB	≤0.10dB
VSWR(@0.8-1.0 GHz)	≤1.10	≤1.10	≤1.10	≤1.10	≤1.10
VSWR(@1.7-2.5 GHz)	≤1.10	≤1.10	≤1.10	≤1.10	≤1.10
VSWR(@2.5-3.0 GHz)	≤1.15	≤1.15	≤1.15	≤1.15	≤1.15
PIM3	≤-155dBc	≤-155dBc	≤-155dBc	≤-155dBc	≤-155dBc
Temperature Range	'-40°C to+85°C	'-40°C to+85°C	'-40°C to+85°C	'-40°C to+85°C	'-40°C to+85°C
Sealing Class	Ip67	Ip65	Ip67	Ip65	Ip67
RoHS	'Compliant	'Compliant	'Compliant	'Compliant	'Compliant

◆◆◆ Leaky Cable Connector



Specification	1/2", 7/8", 1-1/4", 1-5/8" Leaky Cable	
	N type	7/16 type
	Straight	Straight
Characteristics Impedance	50 Ohm	50 Ohm
Frequency Range	DC~18GHz	DC~18GHz
Insulation Resistance	≥5000MΩ	≥5000MΩ
Center contact resistance	≤1.00 mΩ	≤0.40 mΩ
Outer contact resistance	≤0.25 mΩ	≤0.20 mΩ
Dielectric Withstanding Voltage	2500V rms(AC)	4000V rms(AC)
Insertion Loss(@3 GHz)	≤0.10dB	≤0.10dB
VSWR(@0.8-1.0 GHz)	≤1.10	≤1.10
VSWR(@1.7-2.5 GHz)	≤1.10	≤1.10
VSWR(@2.5-2.7 GHz)	≤1.15	≤1.15
Temperature Range	*-40°C to+85°C	*-40°C to+85°C
Sealing Class	Ip67	Ip67
RoHS	*Compliant	*Compliant

High Temperature Resistant Cable Connector



Specification	N type	7/16 type	4.3/10 type
	Straight	Straight	Straight
Characteristics Impedance	50 Ohm	50 Ohm	50 Ohm
Frequency Range	DC~18GHz	DC~7.5GHz	DC~6GHz
Insulation Resistance	≥5000MΩ	≥5000MΩ	≥5000MΩ
Center contact resistance	≤1.00 mΩ	≤0.40 mΩ	≤1.00 mΩ
Outer contact resistance	≤0.25 mΩ	≤0.20 mΩ	≤1.00 mΩ
Dielectric Withstanding Voltage	2500V rms(AC)	4000V rms(AC)	2500V rms(AC)
Insertion Loss(@3 GHz)	≤0.10dB	≤0.10dB	≤0.10dB
VSWR(@0.8-1.0 GHz)	≤1.10	≤1.10	≤1.10
VSWR(@1.7-2.5 GHz)	≤1.10	≤1.10	≤1.10
VSWR(@2.5-3.0 GHz)	≤1.15	≤1.15	≤1.15
PIM3	≤-155dBc	≤-155dBc	≤-155dBc
Temperature Range	'-40°C to+85°C	'-40°C to+85°C	'-40°C to+85°C
Sealing Class	Ip67	Ip67	Ip67
RoHS	'Compliant	'Compliant	'Compliant

◆◆◆ Panel Connector



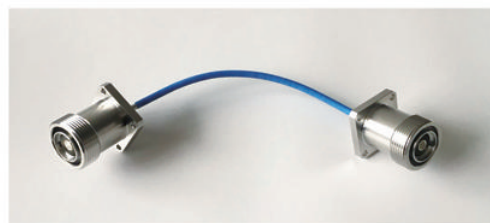
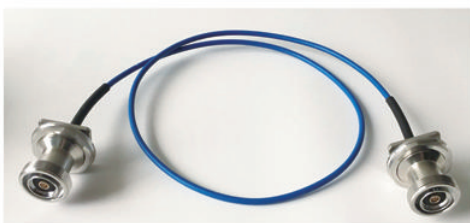
Specification	N type	7/16 type	4.3/10 type
	Straight	Straight	Straight
Characteristics Impedance	50 Ohm	50 Ohm	50 Ohm
Frequency Range	DC~18GHz	DC~7.5GHz	DC~6GHz
Insulation Resistance	≥5000MΩ	≥5000MΩ	≥5000MΩ
Center contact resistance	≤1.00 mΩ	≤0.40 mΩ	≤1.00 mΩ
Outer contact resistance	≤0.25 mΩ	≤0.20 mΩ	≤1.00 mΩ
Dielectric Withstanding Voltage	2500V rms(AC)	4000V rms(AC)	2500V rms(AC)
Insertion Loss(@3 GHz)	≤0.10dB	≤0.10dB	≤0.10dB
VSWR(@0.8-1.0 GHz)	≤1.10	≤1.10	≤1.10
VSWR(@1.7-2.5 GHz)	≤1.10	≤1.10	≤1.10
VSWR(@2.5-3.0 GHz)	≤1.15	≤1.15	≤1.15
PIM3	≤-155dBc	≤-155dBc	≤-155dBc
Temperature Range	'-40°C to+85°C	'-40°C to+85°C	'-40°C to+85°C
Sealing Class	Ip67	Ip67	Ip67
RoHS	'Compliant	'Compliant	'Compliant

RF Jumper Cable



Specification	1/4", 1/4"S,3/8",3/8"S,1/2", 1/2"S, feeder cable					
	N type		7/16 type		4.3/10 type	
	Straight	Right Angle	Straight	Right Angle	Straight	Right Angle
Characteristics Impedance	50 Ohm	50 Ohm	50 Ohm	50 Ohm	50 Ohm	50 Ohm
Frequency Range	DC~18GHz	DC~18GHz	DC~7.5GHz	DC~6GHz	DC~6GHz	DC~7.5GHz
Insulation Resistance	≥5000MΩ	≥5000MΩ	≥5000MΩ	≥5000MΩ	≥5000MΩ	≥5000MΩ
Voltage Between Inner And Outer Conductor	2500V rms (DC,1Min)	2500V rms (DC,1Min)	2500V rms (DC,1Min)	2500V rms (DC,1Min)	2500V rms (DC,1Min)	2500V rms (DC,1Min)
Log Mag	'@DC~3.0GHz ≤A*L+0.2dB (A= attenuation of cable,different type different value)					
VSWR (@DC~2.5GHz)	≤1.10	≤1.15	≤1.10	≤1.15	≤1.10	≤1.15
VSWR (@DC~3.0GHz)	≤1.10	≤1.15	≤1.10	≤1.15	≤1.10	≤1.15
PIM3	≤-155dBc	≤-155dBc	≤-155dBc	≤-155dBc	≤-160dBc	≤-160dBc
Sealing Class	Ip68	Ip68	Ip68	Ip68	Ip68	Ip68
RoHS	'Compliant	'Compliant	'Compliant	'Compliant	'Compliant	'Compliant

High Temperature Resistant Jumper Cable

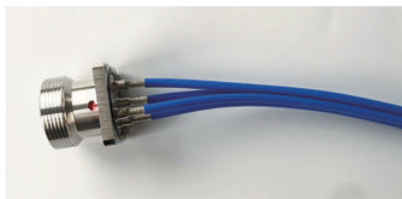


Specification	High Temperature resistant cable		
	N type	7/16 type	4.3/10 type
	Straight	Straight	Straight
Characteristics Impedance	50 Ohm	50 Ohm	50 Ohm
Frequency Range	DC~18GHz	DC~7.5GHz	DC~6GHz
Insulation Resistance	≥5000MΩ	≥5000MΩ	≥5000MΩ
Voltage Between Inner And Outer Conductor	2500V rms (DC, 1Min)	2500V rms (DC, 1Min)	2500V rms (DC, 1Min)
Log Mag	'@DC~3.0GHz ≤A*L+0.2dB (A= attenuation of cable, different type different value)		
VSWR (@DC~2.5GHz)	≤1.10	≤1.10	≤1.10
VSWR (@DC~3.0GHz)	≤1.10	≤1.10	≤1.10
PIM3	≤-155dBc	≤-155dBc	≤-160dBc
Sealing Class	Ip68	Ip68	Ip68
RoHS	'Compliant	'Compliant	'Compliant

◆◆◆ Bamboo Jumper Cable



Specification	Straight
Characteristics Impedance	50 Ohm
Frequency Range	1.8~4.0GHz
Insulation Resistance	≥5000MΩ
Dielectric Withstanding Voltage	1500V rms(AC)
Insertion Loss (@1.8 GHz)	≤0.32×L+0.1×2 (dB)
Insertion Loss (@3.6 GHz)	≤0.46×L+0.1×2 (dB)
VSWR (@1.8~2.7 GHz)	≤1.2
VSWR (@2.7~4.0 GHz)	≤1.35
RoHS	*Compliant



Specification	Straight
Characteristics Impedance	50 Ohm
Frequency Range	1.8~4.0GHz
Insulation Resistance	≥1000MΩ
Dielectric Withstanding Voltage	1500V rms(AC)
VSWR (@1.8~2.7 GHz)	≤1.2
VSWR (@2.7~4.0 GHz)	≤1.35
RoHS	*Compliant

◆◆◆ Surge Arrester



Specification	14λ		Gas discharge tube
	DINM-DINF	NM-NF	NM-NF
Characteristics Impedance	50 Ohm	50 Ohm	50 Ohm
Frequency Range	800MHz~2700MHz	800MHz~2700MHz	800MHz~2700MHz
Center contact resistance	≤0.40mΩ	≤1.0mΩ	≤1.00mΩ
Outer contact resistance	≤0.20mΩ	≤0.25mΩ	≤0.25mΩ
Maximum Surge Current	60kA repetition(wave from 8/20us)	60kA repetition(wave from 8/20us)	10kA repetition(wave from 8/20us)
Residual Pulse Voltage	≤100V(wave from 8/20us)	≤100V(wave from 8/20us)	≤100V(wave from 8/20us)
Average Power	2000W	2000W	
Insertion Loss	≤0.20dB @2700MHz	≤0.20dB @2700MHz	≤0.10dB @2700MHz
VSWR	≤1.20 @800-2700MHz	≤1.20 @800-2700MHz	≤1.20 @DC-3000MHz
Operating Temperature	40 °C to +150 °C	40 °C to +150 °C	40 °C to +150 °C
Sealing Class	Ip67	Ip67	Ip67
RoHS	Compliant	Compliant	Compliant

◆◆◆ Adaptor



Specification	N type	7/16 type	4.3/10 type
	Straight	Straight	Straight
Characteristics Impedance	50 Ohm	50 Ohm	50 Ohm
Frequency Range	DC~18GHz	DC~7.5GHz	DC~6GHz
Insulation Resistance	≥5000MΩ	≥5000MΩ	≥5000MΩ
Center contact resistance	≤1.00 mΩ	≤0.40 mΩ	≤1.00 mΩ
Outer contact resistance	≤0.25 mΩ	≤0.20 mΩ	≤1.00mΩ
Dielectric Withstanding Voltage	2500V rms(AC)	4000V rms(AC)	2500V rms(AC)
Insertion Loss (@3 GHz)	≤0.10dB	≤0.10dB	≤0.10dB
VSWR (@0.8-1.0 GHz)	≤1.10	≤1.10	≤1.10
VSWR (@1.7-2.5 GHz)	≤1.10	≤1.10	≤1.10
VSWR (@2.5-3.0 GHz)	≤1.15	≤1.15	≤1.15
PIM3	≤-155dBc	≤-155dBc	≤-155dBc
Temperature Range	'-40°C to +85°C	'-40°C to +85°C	'-40°C to +85°C
Sealing Class	Ip67	Ip67	Ip67
RoHS	'Compliant	'Compliant	'Compliant

◇◇◇ DC Block



Specification	4.3/10M-4.3/10F	NM-NF	7/16M-7/16F
Characteristics Impedance	50 Ohm	50 Ohm	50 Ohm
Frequency Range	50MHz~3000MHz	50MHz~3000MHz	50MHz~3000MHz
Center contact resistance	≤1.00mΩ	≤1.00mΩ	≤0.4mΩ
Outer contact resistance	≤1.00mΩ	≤0.25mΩ	≤0.2mΩ
Blocking DC voltage	3000V (for VSWR=1.0 at sea level, ambient)	3000V (for VSWR=1.0 at sea level, ambient)	3000V (for VSWR=1.0 at sea level, ambient)
Insertion Loss (@50-3000MHz)	≥-0.25	≥-0.25	≥-0.25
VSWR(@50-3000MHz)	≤1.15	≤1.15	≤1.15
Operating Temperature	55 °C to +100 °C	55 °C to +100 °C	55 °C to +100 °C
Sealing Class	Ip40	Ip40	Ip40
RoHS	Compliant	Compliant	Compliant

RF Cable



Flexible	Super Flexible	Aluminum Cable
HCAAY-50-6(1/4")	HRCAY-50-5(1/4"s)	HCAAY(Z)-50-12(1/2" L)
HCAAY-50-8(3/8")	HRCAY-50-7(3/8"s)	HCTAY(Z)-50-23(7/8" AL)
HCAAY-50-12(1/2")	HRCAY-50-9(1/2"s)	HCTAY(Z)-50-32(1-1/4" L)
HCTAY-50-22(7/8")	HRCTY-50-21(7/8"s)	HHTAY(Z)-50-42(1-5/8" L)
HCTAY-50-32(1-1/4")	HRCTY-50-31(1-1/4"s)	
HCTAY-50-42(1-5/8")		

Leaky Cable



Clupling Type	Radiating Type
HLCAAY-50-12(1/2")	HLCAAY-50-12(1/2")
HLCTY(R)-50-22(7/8")	HLCTY(R)-50-22(7/8")
HLCTY(R)-50-32(1-1/4")	HLCTY(R)-50-32(1-1/4")
HLHTY(R)-50-42(1-5/8")	HLHTY(R)-50-42(1-5/8")

High Power Splitter/Divider



High Power Splitter (N-F, Round)



High Power Splitter (N-F, Square)



High Power Splitter (DIN-F, Square)



High Power Splitter (4.3-10, Square)

Electrical & Mechanical Specifications			
Model Number	XXPS-727-02-R XXPS-727-02-S	XXPS-727-03-R XXPS-727-03-S	XXPS-727-04-R XXPS-727-04-S
Frequency Band(MHZ)	698-2700; 380-2700; 700-3600; 380-6000		
Split Loss(dB)	3	4.8	6
Insertion Loss(dB)	≅0.4	≅0.5	≅0.6
VSWR	≅1.25 (N); ≅1.30 (DIN/4.3-10)		
PIM3(dBc@2*43dBm)	≅-150 or ≅-160		
Impedance(ohm)	50		
Power Rating(W)	300 (N & 4.3-10); 500 (DIN)		
RF Connector	N-female; DIN-female; 4.3/10		
Working Temperature(deg)	-35~+65		
Application	Indoor/Outdoor, IP65		
Relative Humidity	0-95%		
Color	Black or Light Grey		
Weight(kg, N-type)	0.43	0.48	0.52
Dimensions(mm)	246x67x25	275x67x25	275x67x46

◆◆◆ Low Power Splitter/Divider



Low Power Splitter
(N-F, DIN-F, 4.3-10)

Electrical & Mechanical Specifications			
Model Number	XXPS-727-02-M	XXPS-727-03-M	XXPS-727-04-M
Frequency Band(MHZ)	698-2700		
Split Loss(dB)	3	4.8	6
Insertion Loss(dB)	$\cong 0.5$	$\cong 0.8$	$\cong 0.7$
Isolation(dB)	$\cong 20$	$\cong 20$	$\cong 20$
VSWR	$\cong 1.30$		
PIM3(dBc@2*43dBm)	$\cong -150$ or $\cong -160$		
Power Rating(W)	50		
RF Connector	N-female; DIN-female; 4.3/10		
Working Temperature(deg)	-35~+65		
Application	Indoor/Outdoor, IP65		
Relative Humidity	0-95%		
Color	Black or Light Grey		
Weight(kg, N-type)	0.38	0.7	0.9
Dimensions(mm)	114x60x28	142x91x28	135x121x28



VHF/UHF/2-6G Low Power Splitter

Electrical & Mechanical Specifications			
Model Number	XXPS-VHF-02-M	XXPS-VHF-03-M	XXPS-VHF-04-M
Frequency Band(MHZ)	400-430; 136-174; 2-6GHz		
Split Loss(dB)	3	4.8	6
Insertion Loss(dB)	$\cong 0.4$; $\cong 1.5$	$\cong 0.5$ / $\cong 1.2$	$\cong 1.5$
Isolation(dB)	$\cong 20$ / $\cong 20$	$\cong 20$ / $\cong 18$	$\cong 20$ / $\cong 20$
VSWR	$\cong 1.3$ / $\cong 1.45$	$\cong 1.3$ / $\cong 1.5$	$\cong 1.3$ / $\cong 1.5$
Power Rating(W)	50		
RF Connector	N-female; DIN-female; 4.3/10		
Working Temperature(deg)	-35~+65		
Application	Indoor		
Color	Black or Light Grey		
Weight(kg, N-type)	0.38	0.7	0.9
Dimensions(mm)	114x60x28	142x91x28	135x121x28

Directional Coupler



Directional Coupler
(N-F, DIN-F, 4.3-10)

Electrical & Mechanical Specifications						
Model Number	XXDC-727-05/06	XXDC-727-07/08	XXDC-727-10	XXDC-727-13/15	XXDC-727-20	XXDC-727-30
Frequency (MHZ)	698-2700; 380-2700; 700-3800; 380-6000					
Insertion Loss(dB)	$\leq 2.0 / \leq 1.75$	$\leq 1.45 / \leq 1.30$	≤ 0.8	$\leq 0.8 / \leq 0.5$	≤ 0.4	≤ 0.4
Coupling(dB)	2017/5/6	2017/7/8	10	13/15	20	30
Accuracy(dB)	$\pm 0.8 / \pm 0.8$	$\pm 0.8 / \pm 0.8$	± 1.0	$\pm 1.0 / \pm 1.0$	± 1.2	± 1.5
Isolation(dB)	$\geq 25 / \geq 26$	$\geq 27 / \geq 28$	≥ 28	$\geq 31 / \geq 32$	≥ 35	≥ 45
VSWR	≤ 1.25 (N); ≤ 1.30 (DIN & 4.3-10)					
PIM	≤ -150 or ≤ -160					
Power(W)	300 (N & 4.3-10); 500 (DIN)					
Impedance(ohm)	50					
RF Connector	N-female; DIN-female; 4.3/10					
Color	Black or Light Grey					
Temperature	$-20 \sim +70$					
Application	Indoor/Outdoor, IP65					
Weight(kg, N-type)	0.6					
Dimensions(mm)	126x45x18.5					



VHF/UHF Directional Coupler
(400-430MHz, 136-174MHz)

Model Number	YC-VU-06	YC-VU-10	YC-VU-15	YC-VU-20	YC-VU-30
Frequency (MHZ)	400-430, 136-174				
Insertion Loss(dB)	≤ 2.0	≤ 0.8	≤ 0.5	≤ 0.4	≤ 0.4
Coupling(dB)	6	10	15	20	30
Accuracy(dB)	± 0.8	± 1.0	± 1.0	± 1.2	± 1.5
Isolation(dB)	≥ 26	≥ 30	≥ 35	≥ 40	≥ 50
VSWR	≤ 1.25				
Impedance(ohm)	50				
Power(W)	200				
Connector	N-female				
Weight(kg, N-type)	0.24				
Color	Black or Light Grey				

◆◆◆ Hybrid Coupler(2*2&4*4)



2*2 Hybrid Coupler
(N-F, DIN-F, 4.3-10)

Electrical & Mechanical Specifications	
Model Number	XXHC-727-22
Frequency(MHZ)	698-2700; 380-2700
Insertion Loss(dB)	$\cong 0.65$ (698-2700); $\cong 1.0$ (380-2700)
Coupling(dB)	3
Isolation(dB)	$\cong 23$ (698-2700); $\cong 20$ (380-2700);
VSWR	$\cong 1.25$ (N); $\cong 1.30$ (DIN & 4.3-10)
PIM(dBc@2*43dBm)	$\cong -150$ or $\cong -160$
Power(W)	300W (N & 4.3-10); 500 (DIN)
Impedance(ohm)	50



4*4 Hybrid Coupler
(N-F & DIN-F & 4.3-10)

Electrical & Mechanical Specifications		
Model Number	XXHC-727-33	XXHC-727-44
Frequency(MHZ)	698-2700	698-2700
Insertion Loss(dB)	$\cong 0.65$	$\cong 0.71$
Isolation(dB)	$\cong 20$	$\cong 20$
VSWR	$\cong 1.25$ (N); $\cong 1.30$ (DIN/4.3-10)	
PIM(dBc@2*43dBm)	$\cong -150$; $\cong -153$; $\cong -155$; $\cong -160$	
Power(W)	300W	
Impedance(ohm)	50	

RF Combiner(Dual-Band)



Dual-band Combiner
(D-6889-DF)

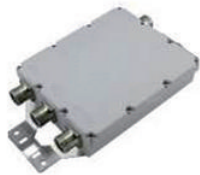


Dual-band Combiner
(D-4912-DF)

Electrical & Mechanical Specifications

Model Number	XXC-D-1112-DF		XXC-D-1112-DF	XXC-D-3912-DF-W	XXC-D-4912-DF	
Frequency (MHZ)	1710-1880	1920-2170	380-960	1710-2700	824-884	905-960
Insertion Loss(dB)	≅0.3	≅0.5	≅0.3	≅0.3	≅0.5	≅0.5
Isolation (dB)	≅50	≅50	≅50	≅50	≅90	≅90
VSWR	≅1.25	≅1.25	≅1.25	≅1.25	≅1.25	≅1.25
Input Power (W)	200		200		200	
Impedance (ohm)	50		50		50	
PIM3 (dBc@2*43dBm)	≅-150, ≅-155, ≅-160		≅-150, ≅-155, ≅-160		≅-150, ≅-155, ≅-160	
Lightning Protection	IEC 61000-4-5; 3kA, 8/20us		IEC 61000-4-5; 3kA, 8/20us		IEC 61000-4-5; 3kA, 10/350us	
DC-by pass	available		available		available	
Connector	N-F, DIN-F, 4.3-10		N-F, DIN-F, 4.3-10		N-F, DIN-F, 4.3-10	
Color	Black or Light Grey		Black or Light Grey		Black or Light Grey	
Application	Indoor/Outdoor, IP65/IP67		Indoor/Outdoor, IP65/IP67		Indoor/Outdoor, IP65/IP67	
Working Temperature (deg)	-25~+60		-25~+60		-25~+60	
Mounting	Pole or Wall Mount		Pole or Wall Mount		Pole or Wall Mount	
Relative Humidity	5-95%		5-95%		5-95%	

RF Combiner(Tri-Band&Four-Band)



Tri-band Combiner
(T-00A1-DF)



Four-band Combiner
(T-00A2-DF)

Electrical & Mechanical Specifications

Model Number	XXC-T-00A1-DF			XXC-F-00A2-DF				XXC-F-00A3-DF
Freq(MHZ)	380-960	1710-1880	1920-2700	380-960	1710-1880	1920-2170	2500-2690	698-2170
Insertion Loss (dB)	≅0.3	≅0.4	≅0.4	≅0.3	≅0.3	≅0.3	≅0.3	≅0.6
Isolation (dB)	≅50	≅50	≅50	≅50	≅50	≅50	≅50	≅50
VSWR	≅1.3	≅1.3	≅1.3	≅1.3	≅1.3	≅1.3	≅1.3	≅1.3
Input Power (W)	300			300				300
Impedance (ohm)	50			50				50
PIM3 (dBc@2*43dBm)	≅-150, ≅-155, ≅-160			≅-150, ≅-155, ≅-160				≅-150, ≅-155, ≅-160
Lightning Protection	IEC 61000-4-5; 5kA, 10/350us			IEC 61000-4-5; 5kA, 10/350us				IEC 61000-4-5; 5kA, 10/350us
DC-by pass	available			available				available
Connector	N-F, DIN-F, 4.3-10			N-F, DIN-F, 4.3-10				N-F, DIN-F, 4.3-10
Color	Black			Grey				Grey

RF Load/Termination



RF Load/Termination (N, DIN, SMA, 4.3-10, TNC, BNC, QMA)

Electrical & Mechanical Specifications							
Model Number	XXL-5-3-N	XXL-10-3-N	XXL-25-3-N	XXL-30-3-N	XXL-50-3-N	XXL-100-3-N	XXL-200-3-N
Power(W)	2001/2/5	10	25	30	50	100	200
Frequency(GHz)	DC-3GHz/DC-6GHz						
VSWR	≅ 1.20						
PIM(dBc@2*43dBm)	≅ -120; ≅ -150 ; ≅ -155; ≅ -160 (698-2700MHz)						
Impedance(ohm)	50						
RF Connector	N, DIN, SMA, 4.3-10, TNC, BNC, QMA						
Working Temperature (deg)	-55~+125						
Weight(kg, N-type)	0.1	0.15	0.25	0.25	0.4	0.82	2.65
Dimensions	φ20x38	φ30x76.9	φ48x89.4	φ55x95.4	φ55x95.4	φ20x38	226x142x64

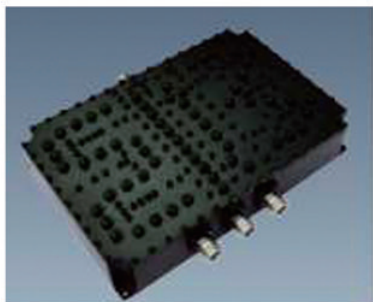
RF Attenuator



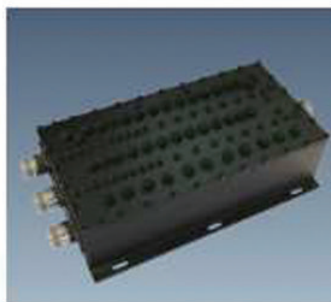
RF Attenuator (N, DIN, SMA, 4.3-10, TNC, BNC, QMA)

Electrical & Mechanical Specifications					
Model Number	XXA-5-3-N	XXA-10-3-N	XXA-25-3-N	XXA-30-3-N	XXA-50-3-N
Power(W)	2001/2/5	10	25	30	50
Frequency(GHz)	DC-3GHz/DC-6GHz				
VSWR	≤ 1.20				
Attenuation(dB)	1, 3, 6, 10, 15, 20, 30, 40, 50, 60				
Accuracy(dB)	±0.5 (1-9dB), ±1.0 (10-30dB), ±1.5 (40dB), ±2.5 (50dB), ±3.0 (60dB)				
PIM(dBc@2*43dBm)	≤ -100; ≤ -110; ≤ -150; ≤ -155; ≤ -160 (698-2700MHz)				
Impedance(ohm)	50				
RF Connector	N, DIN, SMA, 4.3-10, TNC, BNC, QMA				
Working Temperature (deg)	-55~+125				

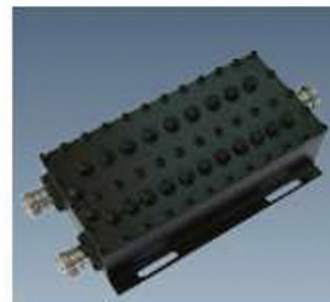
RF Combiner(Tri-Band&Four-Band)



Tri-band Combiner
(MNC-T-00C1-NF)



Tri-band Combiner
(MNC-T-00C2-NF)



Dual-band Combiner
(MNC-D-00Q1-NF)

Model Number	XXC-T-00C1-NF			XXC-T-00C2-NF		
Frequency (MHZ)	800-960	1710-1880	1920-2170	800-960	1710-2170	2400-2500
Insertion Loss(dB)	≦0.4	≦0.8	≦0.8	≦0.5	≦0.5	≦0.5
Isolation (dB)	≧70	≧70	≧70	≧70	≧70	≧70
VSWR	≦1.25	≦1.25	≦1.25	≦1.3	≦1.3	≦1.3
Input Power (W)	200			200		
Impedance (ohm)	50			50		
PIM3 (dBc@2*43dBm)	≦-150			≦-150		
Connector	N-F, DIN-F, 4.3-10			N-F, DIN-F, 4.3-10		
Color	Black			Black		
Application	Indoor			Indoor		
Working Temperature (deg)	-25~+60			-25~+60		

Antennas



Antenna (Omni)

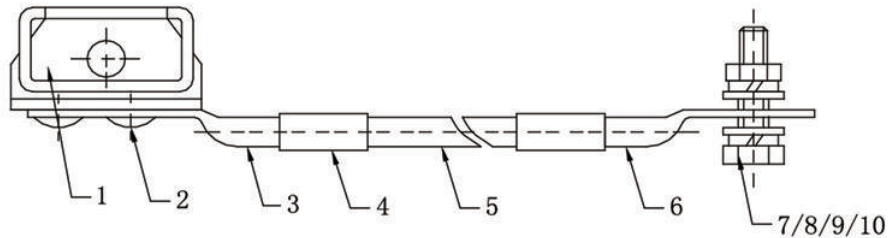
Antenna (Patch Panel)

Antenna (Log-periodic)

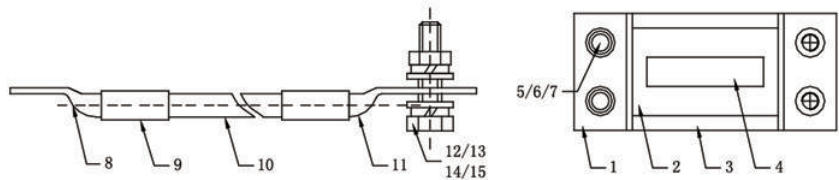
Antenna (Log-periodic)

Electrical & Mechanical Specifications				
Model Number	XXAN-727-OC-NF	XXAN-727-PP-NF	XXAN-LP-727-NF	XXAN-SD-727-NF
Types	Omniceiling Antenna	Patch Panel Antenna	Log-periodic Antenna	Sector Antenna
Frequency range (MHZ)	698-960/1710-2700	698-960/1710-2700	698-960/1710-2700	698-960/1710-2700
Polarization	Vertical	Vertical	Vertical	Vertical
Gain(dBi)	'2.5/5	'5/7	'9/11	'11/12
Horizontal Lobe Width(°)	360	65	90	90
Vertical Lobe Width(°)	91	55	60	40/25
Impedance(Ω)	50	50	50	50
VSWR	≤2.0/ ≤1.5	≤2.0/≤2.0	≤1.8/≤1.8	≤1.4
Maximum input power(W)	50	50	50	50
PIM (dBc@2*43dBm)	≦-120, ≦-150, ≦-153	≦-120, ≦-150, ≦-153	≦-120, ≦-150, ≦-153	/
Lightning protection	DC Ground	DC Ground	DC Ground	DC Ground
Connector	N/4.3-10	N/4.3-10	N/4.3-10	N/4.3-10
Radome material	ABS	ABS	ABS	ABS
Radome color	White	White	White	White
Operating temperature(deg)	-40~60	-40~60	-40~60	-40~60
Dimensions(mm)	Ø186×86	210×180×43	405×210×65	350×175×80
Weight(KG)	0.25	0.5	1.1	2

◆◆◆ Grounding Kits

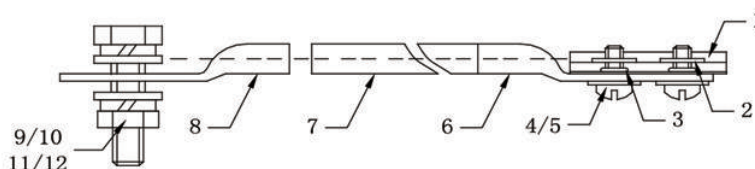


NO.	Piece Parts	Specification	Material
1	Grounding Strap	1/4"~1-5/8"	Copper/SUS304
2	Rivet Kit	5.5*5	Copper
3	Cable lug	M6	Copper,tin-plated
4	Heat shrinkable tube	φ9*30	Polyolefin
5	Grounding cable	16mm ²	Copper(conductor)PVC(jacket),black
6	Cable lug	M8	Copper,tin-plated
7	Bolt	M8*25	SUS304
8	Nut	M8	SUS304
9	Spring washer	M8	SUS304
10	Plain washer	M8	SUS304

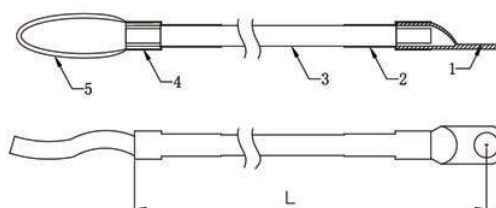


NO.	Piece Parts	Specification	Material
1	Wrap rubber		EPDM black
2	Grounding strap	1/4"~1-5/8"	SUS304
3	Butyl rubber tape	φ5	Butyl rubber
4	Braided tape		Copper,tin-plated
5	O-ring washer	M6	Rubber black
6	Serrated washer	M6	SUS304
7	Inner hexagon screw	M6*25	SUS304
8	Cable lug	M6	Copper,tin-plated
9	Heat shrinkable tube	φ9*30	Polyolefin
10	Grounding cable	16mm ²	Copper(conductor)PVC(jacket),black
11	Cable lug	M8	Copper,tin-plated
12	Nut	M8	SUS304
13	Spring washer	M8	SUS304
14	Plain washer	M8	SUS304
15	Bolt	M8*25	SUS304

◇◇◇ Grounding Kits



NO.	Piece Parts	Specification	Material
1	Grounding strap	$\phi 7.5\sim 9.5$	Copper,tin-plated
2	Rivet nut	M4	SUS304
3	O-ring washer	M4	Rubber black
4	Cross Screw	M4*12	SUS304
5	Plain washer	M4	SUS304
6	Cable lug	M4	Copper,tin-plated
7	Grounding cable	16mm ²	Copper(conductor)PVC(jacket),black
8	Cable lug	M8	SUS304
9	Bolt	M8*25	SUS304
10	Plain washer	M8	SUS304
11	Spring washer	M8	SUS304
12	Nut	M8	SUS304
13	Heat shrinkable tube	$\phi 9\ast 30$	Polyolefin
14	Butyl rubber tape	3M 2166	
15	Self-agglomerating tape	3M1712	

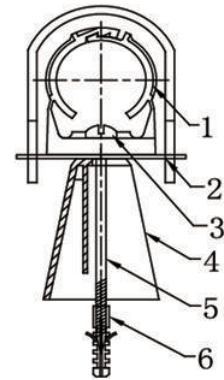


NO.	Piece Parts	Specification	Material
1	Cable lug	M8	Copper,tin-plated
2	Heat shrinkable tube	$\phi 9\ast 30$	Polyolefin
3	Grounding cable	16mm ²	Copper(conductor)PVC(jacket),black
4	Contact bar	$\phi 8\ast 15$	Copper
5	Tin-plated copper mesh	2.5mm ² *500mm	Copper,tin-plated
6	Shrinkable sleeve		SUS304
7	Blot	M8*25	SUS304
8	Spring washer	M8	SUS304
9	Plain Washer	M8	SUS304

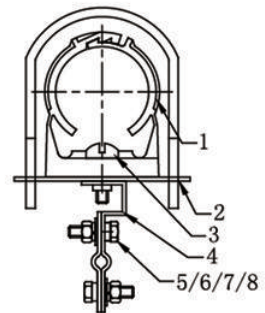
◆◆◆ Leacky Cable Clamps



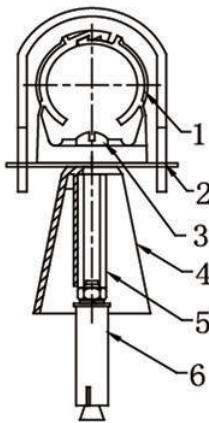
No.	Item	Size	Materials
1	Clamp	1/2", 7/8", 1-1/4", 1-5/8"	Pa12
2	Fireproof	1/2", 7/8", 1-1/4", 1-5/8"	SUS304
3	Cross screw	M8*25	SUS304
4	Body		PA6/12/66
5	Cross screw	M5*130	SUS304
6	Expansion pipe	M8*40	Plastic



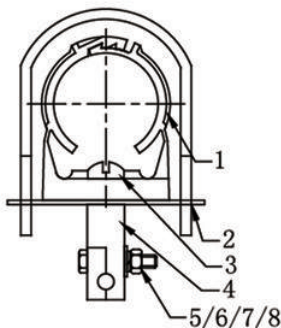
No.	Item	Size	Materials
1	Clamp	1/2", 7/8", 1-1/4", 1-5/8"	Pa12
2	Fireproof	1/2", 7/8", 1-1/4", 1-5/8"	SUS304
3	Cross screw	M8*20	SUS304
4	Hanger		SUS304
5	Outside hex bolts	M8*16	SUS304
6	Plain washer	M8	SUS304
7	Spring washer	M8	SUS304
8	Nut	M8	SUS304



◆◆◆ Leacky Cable Clamps



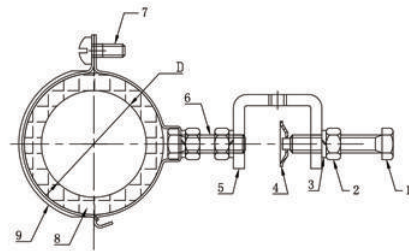
No.	Item	Size	Materials
1	Clamp	1/2", 7/8", 1-1/4", 1-5/8"	Pa12
2	Fireproof	1/2", 7/8", 1-1/4", 1-5/8"	SUS304
3	Cross screw	M8*25	SUS304
4	Body		PA6/12/66
5	Cross screw	M8*70	Q235
6	Expansion pipe	M8*70	Q235



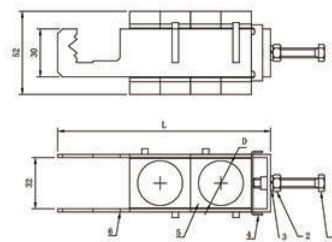
No.	Item	Size	Materials
1	Clamp	1/2", 7/8", 1-1/4", 1-5/8"	Pa12
2	Fireproof	1/2", 7/8", 1-1/4", 1-5/8"	SUS304
3	Cross screw	M8*20	SUS304
4	Hanger		SUS304
5	Outside hex bolts	M6*30	SUS304
6	Plain washer	M6	SUS304
7	Spring washer	M6	SUS304
8	Nut	M6	SUS304

RF Cable Clamps

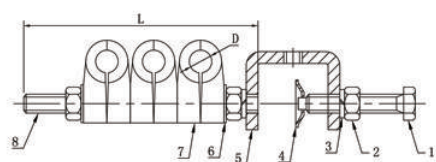
No.	Piece Parts	Materials
1	Bolt M8*45	SUS304
2	Nut M8	SUS304
3	Spring washer M8	SUS304
4	Bowl washer	SUS304
5	C-frame	SUS304
6	Bolt M8*45	SUS304
7	Cross screw M6*16	SUS304
8	Cushion insert	EPDM
9	Hose clamp	SUS304



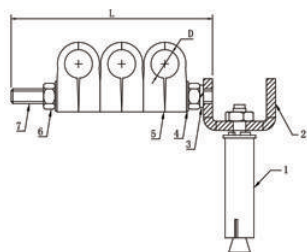
No.	Piece Parts	Materials
1	Bolt M6*35	SUS304
2	Nut M6	SUS304
3	Spring washer M6	SUS304
4	Metal barrier	SUS304
5	Plastic cable clamp	Black PA
6	L-frame	SUS304



RF Cable Clamps



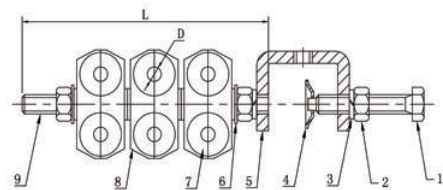
No.	Piece Parts	Materials
1	Bolt M8*45	SUS304/201/Q235
2	Nut M8	SUS304/201/Q235
3	Spring washer M8	SUS304/201/Q235
4	Bowl washer	SUS304/201/Q235
5	C-frame	SUS304/201/Q235
6	Plain washer M8	SUS304/201/Q235
7	Plastic cable clamp	Polypropylene
8	Threaded rod M8*L	SUS304/201/Q235



No.	Piece Parts	Materials
1	Expansion bolt M8*70	SUS304/201/Q235
2	C-frame	SUS304/201/Q235
3	Spring washer M8	SUS304/201/Q235
4	Plain washer M8	SUS304/201/Q235
5	Plastic cable clamp	Polypropylene
6	Nut M8	SUS304/201/Q235
7	Threaded rod M8*L	SUS304/201/Q235

◆◆◆ Hybrid Cable Clamps

No.	Piece Parts	Materials
1	Bolt M8*45	SUS304/201/Q235
2	Nut M8	SUS304/201/Q235
3	Spring washer M8	SUS304/201/Q235
4	Bowl washer	SUS304/201/Q235
5	C-frame	SUS304/201/Q235
6	Plain washer M8	SUS304/201/Q235
7	Insert	Rubber
8	Plastic cable clamp	Polypropylene
9	Threaded rod M8*L	SUS304/201/Q235



Accessories

